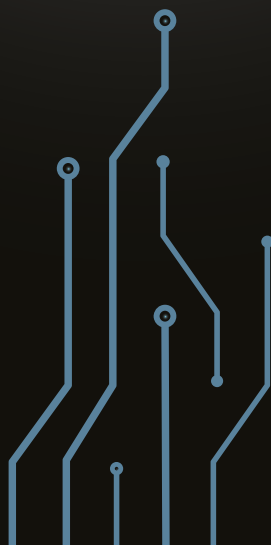
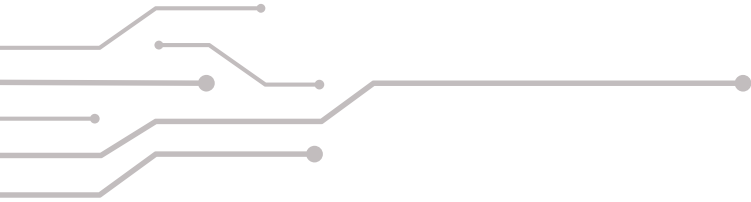




PRECISION
—
TUBES





CONTENTS

Milestones	2
Borusan Holding at a Glance	4
Borusan Pipe in Brief	5
Global Presence	6
Your Total Solution Provider	8
QEHS Management	10
Standards & Certificates	12
Automotive Tubes	14
Hydraulic Applications	16
Industrial Applications	18
Production Ranges	20
Further Processing	24



MILESTONES

1944	1958	1968	1969	1976	1979	1994	1998	2001	2004
Foundation of Borusan	Borusan Boru was founded	Halkalı ERW Pipe Plant started production, İstanbul	First exports	Gemlik ERW Pipe Plant started production, Bursa	Borusan Port inaugurated	Borusan Boru quoted on İstanbul Stock Exchange	Borusan and Mannesmann merged their pipe business activities in Türkiye	Acquisition of cold drawn pipe plant in Vobarno, Italy	The company name is amended as "Borusan Mannesmann"



2009

Borusan Port expansion completed

2011

Gemlik HSAW Pipe Plant started production, Bursa

2014

Houston OCTG Plant started production, Texas

2016

Bursa Service Center started operations, Bursa

2019

Gemlik Cold Drawn Tube Plant started production, Bursa

2023

Acquisition LSAW pipe plant in Florida and HSAW pipe plant in Alabama

2023

Romania Service Center *Coming Soon*

2024

Borusan and Mannesmann partnership has ended. The name of the company has changed as Borusan Boru in Türkiye and Borusan Pipe internationally

BORUSAN HOLDING AT A GLANCE

THE MAIN STRATEGY OF BORUSAN GROUP IS BASED ON CONTINUING TO CREATE ADDED VALUE FOR TÜRKİYE'S ECONOMY WHILE FOSTERING A MINDSET THAT FOCUSES ON GLOBAL MARKETS, AND CREATES INNOVATIVE PRODUCTS AND SERVICES.

Celebrating its 79th anniversary in 2023, the Borusan Group consistently grows in the steel, distributorship, logistics, and energy industries in various world markets, particularly in Türkiye.

In 2006 Borusan Group signed the United Nations Global Compact Policy, which supports and adheres to the principles of "good corporate governance" and "sustainability" as a prerequisite for long-term and permanent success.

PRODUCTION GROUP

Borusan Pipe Borçelik Supsan




LOGISTICS GROUP

Borusan Lojistik Borusan Port



AUTOMOTIVE GROUP

Borusan Automotive Group Borusan Araç İhale Parcapazari.com



ENERGY GROUP

Borusan EnBW Enerji



MACHINERY AND POWER SYSTEMS GROUP

Borusan Cat



PARTNERS

CAT GIWA ArcelorMittal

Eaton EnBW

DISTRUBUTED BRANDS

JAGUAR BMW MINI CAT LAND-ROVER

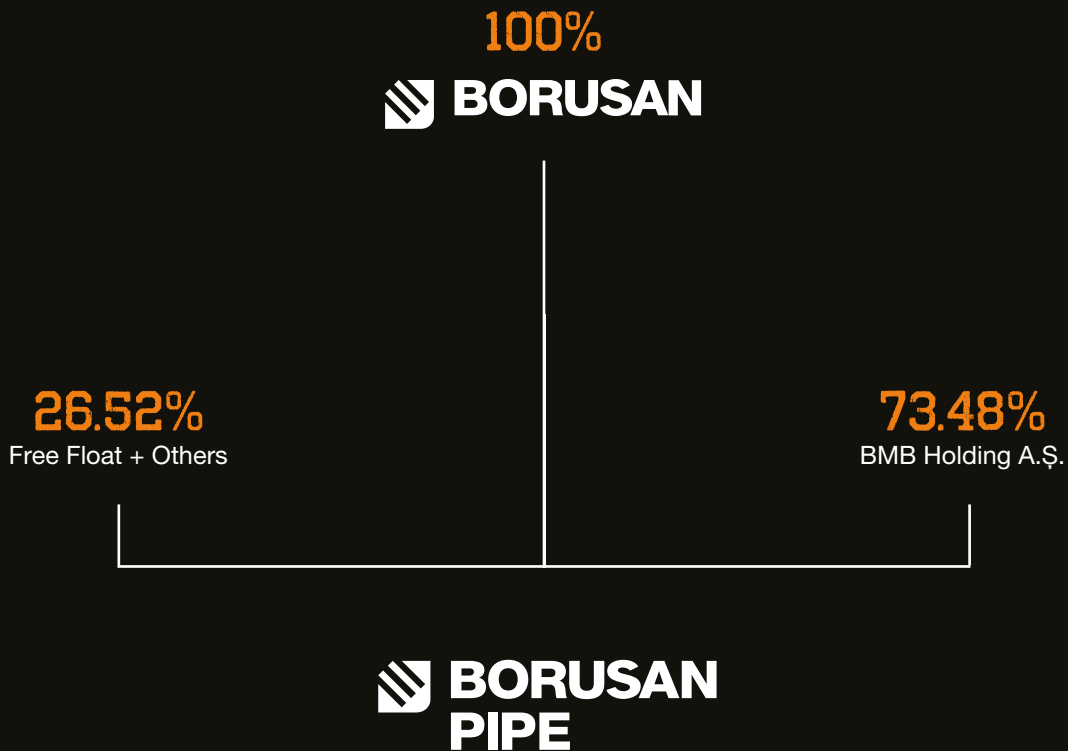
BORUSAN PIPE IN BRIEF

"BORUSAN PIPE IS AMONG THE LEADING MANUFACTURER OF STEEL PIPES IN THE WORLD."

Steel pipe manufacturing is the core business of the Borusan Group, a conglomerate spread over four different industries; steel, distributorship, logistics; and energy. Borusan Pipe continues its production activities with its 11 facilities in 3 different countries in Türkiye, Italy, USA, and Romania.

The company's product range includes; water pipes, oil and gas line pipes, industrial pipes and profiles, installation pipes, OCTG pipes, and hollow sections. Borusan Pipe has wide experience and a range of track records in oil and gas pipeline projects with high-grade API standards in domestic and international markets.

A dynamic, highly qualified staff, regularly trained to keep abreast of new manufacturing and management, ensure that production conforms to exacting quality standards. Borusan Pipe has become the standard-bearer for trust and quality in the sector by bringing added value to products and services with highly qualified employees and the continuously improving workforce.



11 FACILITIES IN 3 CONTINENTS



USA / Texas

Houston ERW Plant

Sectors served : Energy Sector
 Workforce : 300
 Area : 500.000 m²

USA / Texas

Houston SRM Plant (Coming Soon)

Sectors served : Water Transmission
 Workforce : 300
 Area : 500.000 m²

Italy

Vobarno Plant

Sectors served : Engineering Technologies
 Workforce : 90
 Area : 24.000 m²

USA / Borusan Berg Pipe Florida

Panama City LSAW Pipe Plant

Sectors served : Energy Sector
 Workforce : 171
 Area : 28.600 m²

USA / Borusan Berg Pipe Alabama

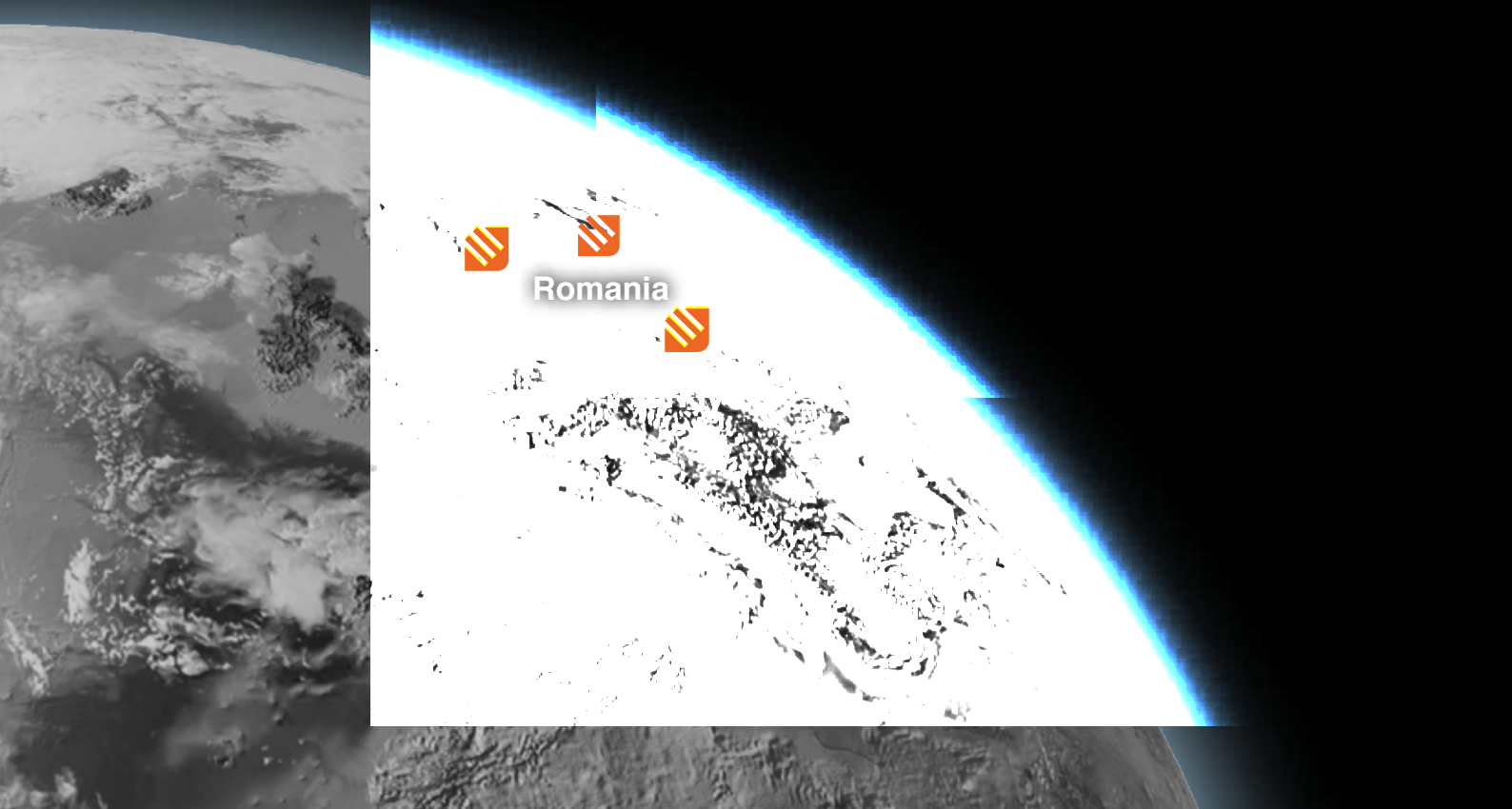
Mobile Pipe HSAW Pipe Plant

Sectors served : Energy Sector
 Workforce : 99
 Area : 30.600 m²

Romania

Ploiești Service Center (Coming Soon)

Sectors served : Automotive
 Expected workforce till 2026 : 99
 Area : 4.800 m²



Türkiye

Gemlik ERW Pipe Plant

Sectors served : Energy, Construction,
Water Transmission

Workforce : 750
Area : 388.000 m²

Gemlik HSAW Pipe Plant

Sectors served : Energy, Construction,
Water Transmission

Workforce : 140
Area : 70.000 m²

Gemlik Automotive Tubes Plant

Sectors served : Automotive and
Engineering Technologies

Workforce : 50
Area : 20.000 m²

Halkalı Plant

Sectors served : Engineering
Technologies

Workforce : 450
Area : 67.000 m²

Bursa Service Center

Sectors served : Automotive
Workforce : 300
Area : 500.000 m²

YOUR TOTAL SOLUTION PROVIDER;
BORUSAN PIPE





EXCEEDING LIMITS WITH CONTINUOUS R&D

Borusan Pipe's research and development philosophy enables us to carry out research activities in all markets and develop new products for our customer's and market needs. As Borusan Pipe; we also conduct joint projects with our raw material suppliers to develop special material qualities for the manufacture of desired products. We collaborate in performing trial productions and troubleshooting activities to maintain excellence in product and process design and implementation to the best possible extent.

As a company that embraces Lean 6 Sigma methodology; launching breakthrough technologies, improving production and process control steps is a part of our daily life.

VOC - MOST VALUABLE DRIVING FORCE

Borusan Pipe has been capturing the requirements and feedback of our customers to provide the best product and service quality. We have been applying the VOC - Voice of Customer process since 2003. Serving to our customers and delivering synergetic solutions in the most cost effective way is a consistent discipline in Borusan Pipe. We aim to compose personal recipes for special market needs. This approach leads us to go beyond ourselves and present valuable services for our customers.

WELL ESTABLISHED SALES ORGANIZATION

Borusan Pipe's sales experts provide fast response and reliable technical consultation in close cooperation with our customers before and after the sales process. Our sales organization is made of professional local representatives who speak our customer's language in their market and always provide the best solutions for the business. Company's representatives are carefully picked from the best of highly qualified distributors in the local market. We provide the best solutions; in your country, in your language with equipped people.

QEHS MANAGEMENT





Borusan Group companies all share a common set of guiding principles, which help this vast enterprise to operate in complete harmony. These principles are commitments to productivity, innovation, and environmental responsibility.

From raw material to finished product, Borusan Pipe determines the impacts on the environment and reduce impacts control each step of the process. Our Environmental Management System Certificate (ISO 14001) proves our commitment to environment. Healthy performance is delivered through healthy people. In compliance with ISO 45001, Borusan Pipe's endeavors to protect the health and safety of its workforce and service providers. Borusan Pipe; exemplary with its modern management approach, as well as its investments, has been applying The Lean Six Sigma methodology since 2002 and Voice of Customer (VOC) process since 2003.

The Lean Six Sigma methodology is a highly disciplined business management strategy that seeks to remove the causes of defects in production and business processes, and to continuously improve productivity, profitability, and customer satisfaction. Besides with the VOC process, we capture the requirements and feedback from our customers to provide the best product and service quality.

Ongoing efforts to improve customer satisfaction brought Borusan Pipe, Complaints Handling Management Systems Certificate (ISO 10002), which is a first in the steel pipe sector globally.

Quality Management Certificates

IATF 16949 Quality Management Systems Standard For The Automotive Industry
ISO 9001 Quality Management Systems
ISO 14001 Environmental Management Systems
ISO 10002 Quality Management Systems For Customer Satisfaction
ISO 45001 Occupational Health and Safety Management Systems

Quality System Certificates



STANDARDS & CERTIFICATES



PRODUCTION STANDARDS

Welded Cold Sized Tubes : EN 10305-3
Welded Cold Drawn Tubes : EN 10305-2
Welded Cold Sized Square and Rectangular Tubes : EN 10305-5

Note: Other standards such as ASTM A513, JIS G 3445 etc. upon request

STEEL GRADES

Structural Steels : S235, S275, S355
DQ Steels : DC01, DC03, DC04
HSLA Steels : S315MC, S355MC, S420MC, S460MC, S500MC, S550MC, S600MC, S700MC
Dual Phase Steels : DP500, DP600, DP800, DP1000
Heat Treatable Steels : 20MnB5, 22MnB5, 26MnB5, 30MnB5, 34MnB5
Coated (Galvanized, aluminized) Steels : DX51, DX52, DX53, S220, S350

Note: Other grades upon request

TESTS & INSPECTIONS

- Visual Examination
- Dimensional Inspection
- Metallographic Inspection
- Tensile Test
- Drift Expanding / Flaring Test
- Flattening Test
- Hardness Testing (HV, HRB, HRC)
- Ultrasonic Testing
- Flanging Test
- Chemical Analysis
- Eddy Current Testing
- Surface Roughness Measurement

INSPECTION DOCUMENTS

MTC (Mill Test Certificates) acc. to EN 10204 3.1; 2.2

AUTOMOTIVE TUBES



SHOCK
ABSORBER
TUBES



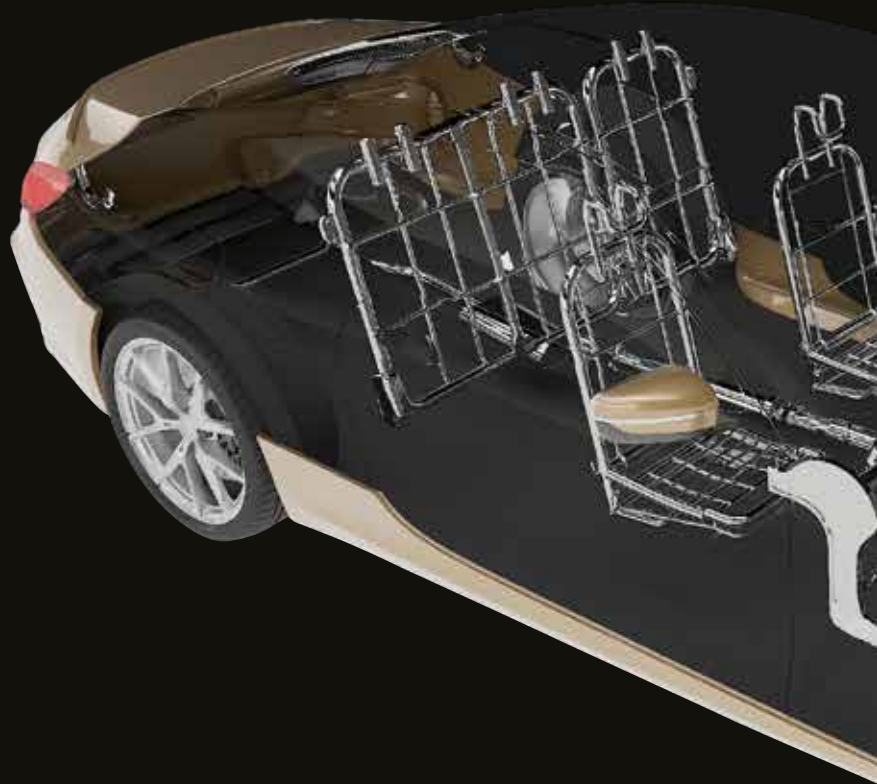
STABILIZER



STEERING
COLUMN
TUBES



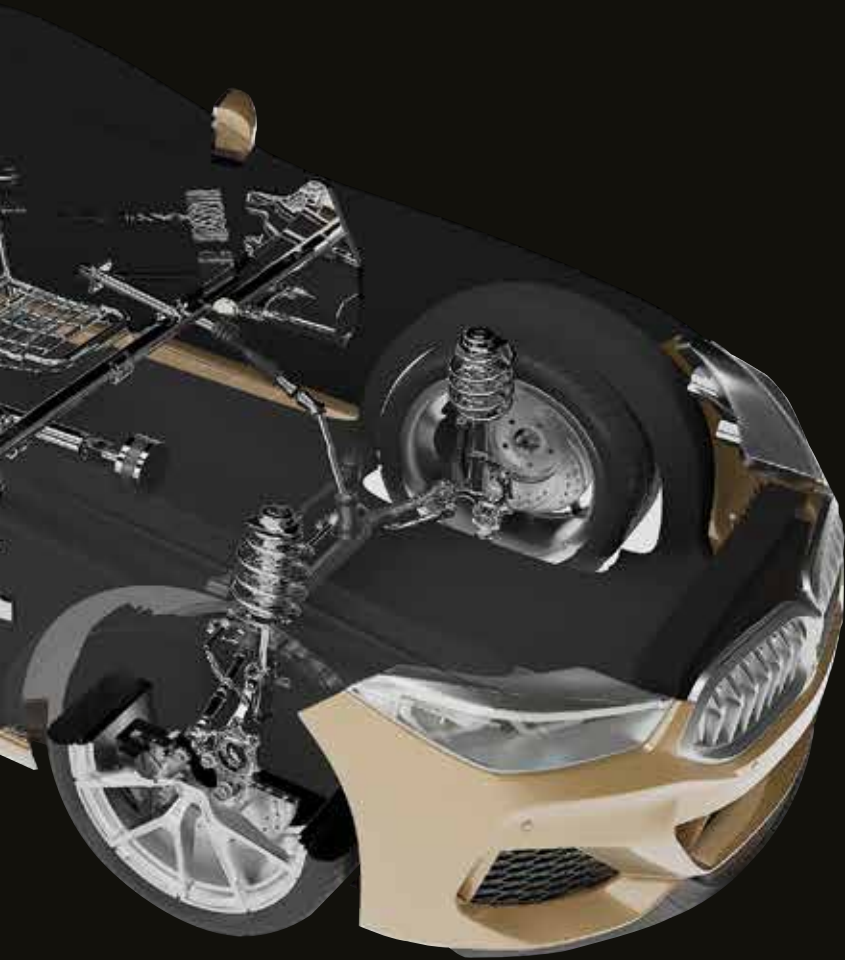
TIE
ROD
TUBES



BORUSAN PIPE IS A HIGHLY RECOGNIZED MANUFACTURER FOR ITS PRODUCT AND SERVICE QUALITY IN AUTOMOTIVE INDUSTRY.

Our plants, one in Vobarno-Italy, one in Gemlik-Türkiye and one in Halkalı-Türkiye are specialized in production of value added precision tubes that are used in crucial parts of vehicles. Working together; our sales, quality and design teams manage all kinds of technical, schematic inquires and response our customers with custom made solutions.

Products are commonly used in passenger cars, light and heavy commercial vehicles which are travelling around the globe.



AXLE



TRUNK
HINGE



CARDAN
SHAFT
TUBES



CROSS CAR
BEAMS



DOOR
IMPACT
BEAMS



GAS
SPRING



EXHAUST
TUBES



FRONT SEAT
FRAME TUBES



HEAD REST
TUBES

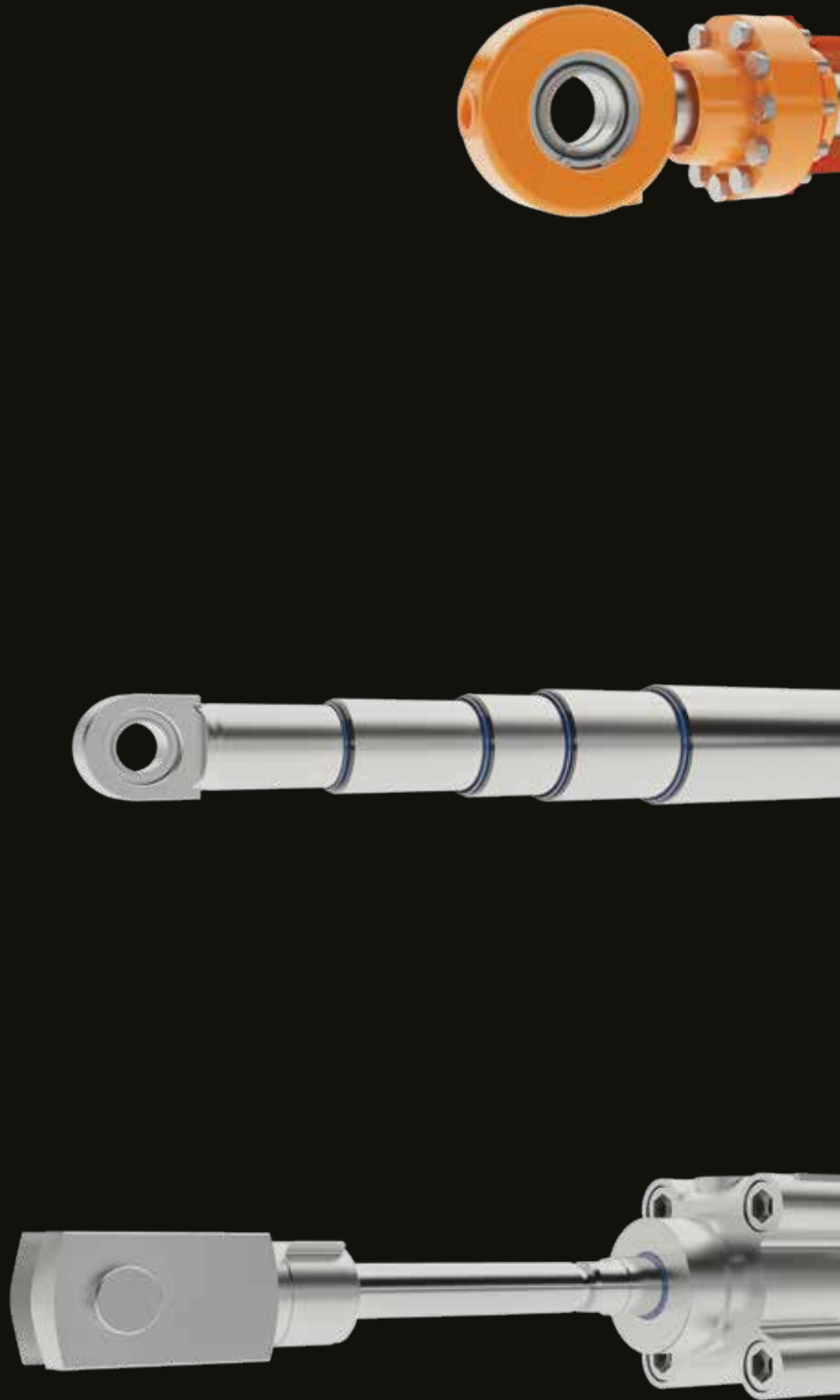


REAR SEAT
FRAME TUBES

Tubes of Borusan Pipe are used in earth moving machines, agricultural machines, trucks and several machineries.

With the ability of producing ready to use tubes and suitable for honing and roller burnishing tubes, Borusan Pipe is an ideal supplier for hydraulic applications.

HYDRAULIC APPLICATIONS

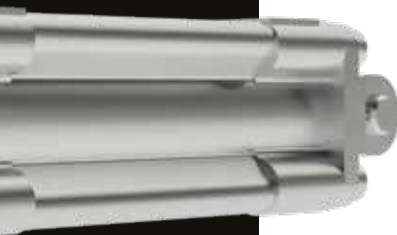




HYDRAULIC CYLINDERS



TELESCOPIC CYLINDERS



PNEUMATIC CYLINDERS

INDUSTRIAL APPLICATIONS CUSTOM SHAPED STEEL PROFILES



Borusan Pipe manufactures custom shaped profiles with the highest degree of functionality according to customer expectations. Custom designed profiles are used in a variety of applications for different sectors such as automotive, construction, agricultural machinery, towel rails, furniture etc...

We supply profiles with most accurate tolerances to meet customers' requirements and drawings. Borusan Pipe has the knowledge to select the most suitable forming technologies to meet specific requirements.

TECHNOLOGIES FOR SPECIAL SHAPE PROFILES

- Direct Roll Forming
- HFW + Cold Forming
- Forming by Cold Drawing

We are ready to produce according to different type of standards and/or customers specialized technical requirements.

Steel grades, wall thickness, dimensions and tolerances may vary according requirements of final product. Different pre-coated raw materials and final coating methods are available upon request.



FURTHER PROCESSING

- Length Cutting
- Bending
- Hole Drilling
- Online Die Stamping

TESTS & INSPECTIONS

- Visual Examination
- Dimensional Inspection
- Metallographic Inspection
- Tensile Test
- Chemical Analysis
- Flattening Test
- Hardness Testing (HV, HRB, HRC)
- Eddy Current Testing
- 3D Scanning

INSPECTION DOCUMENTS

- MTC (Mill Test Certificates) acc. to EN 10204 2.2, 3.1

PRODUCTION RANGES

WELDED COLD DRAWN TUBES FOR PRECISION APPLICATIONS

OD mm	Wall Thickness (mm)																										
	0,9	1	1,25	1,5	1,75	2	2,25	2,5	2,75	3	3,25	3,5	4	4,25	4,5	5	5,5	6	6,5	7	7,5	8	8,5	9	10		
15																											
16 - 17																											
18 - 19																											
20 - 21																											
22 - 23																											
24 - 25																											
26 - 27																											
28 - 30																											
31 - 33																											
34 - 36																											
37 - 39																											
40 - 44																											
45 - 47																											
48 - 49																											
50 - 54																											
55 - 57																											
58 - 61																											
62 - 64																											
65 - 66																											
67 - 69																											
70 - 72																											
73 - 74																											
75 - 77																											
78 - 83																											
84 - 87																											
88 - 89																											
90 - 91																											
92 - 96																											
97 - 100																											
101 - 105																											
106 - 110																											
111 - 120																											
121 - 130																											

Cold Drawn Welded Steel Tubes (EN 10305-2)

Please contact our sales department for intermediate sizes.

Delivery Conditions:

+ C (BK) = Cold finished/hard

+ LC (BKW) = Cold finished/soft

+ N (NBK) = Normalized

+ SR (BKS) = Cold finished and stress relieved

+ A (GBK) = Annealed

Standard Norms: TS EN 10305-2, UNI 7946, BS 6323 Part 6, NFA 49-341, ASTM A 513

Steel Grades mainly used: RSt 34-2, RSt 37-2, St 44-2, St 52-3

(E 195) (E 235) (E 275) (E 355)

WELDED COLD SIZED TUBES FOR PRECISION APPLICATIONS

OD mm	Wall Thickness (mm)																											
	0,70	1,00	1,20	1,50	1,70	2,00	2,20	2,50	2,80	3,00	3,30	3,50	4,00	4,50	5,00	5,50	6,00	6,50	7,00	7,50	8,00	8,50	9,00	9,50	10,00	10,50	11,00	
5																												
5,5																												
6																												
7																												
8																												
8,2																												
9																												
9,3																												
9,5																												
10																												
11																												
11,1																												
12																												
12,6																												
12,7																												
13																												
13,5																												
14																												
15																												
15,5																												
16																												
17																												
18																												
19																												
20																												
20,5																												
21																												
21,5																												
22																												
23																												
24																												
24,5																												
25																												
25,4																												
26																												
26,9																												
27,2																												
28																												
28,6																												
30																												
31,8																												
32																												
33,7																												
34																												
35																												
36																												
38																												
40																												
41																												
41,5																												
42																												
44																												
44,5																												
45																												
48																												
48,6																												
50																												
51																												
54																												
55																												
55,6																												
56,4																												
56,8																												
57																												
60																												
63,5																												
65																												
67																												
68																												
70																												
76																												
80																												
83																												
88,9																												
93																												

Welded Cold Sized Tubes (EN 10305-3)

Delivery Conditions:

BKM (+CR1 ve + CR2) = Standard

NBK (+N) = Normalized

GBK (+A) = Annealed

Steel Grades: St 14, St 13, St 12, St 34, St 37, St 44, St 52

(E155) (E195) (E235) (E275) (E355)

WELDED COLD SIZED SQUARE AND RECTANGULAR TUBES FOR PRECISION APPLICATIONS

Side Length b x h (mm)	Wall Thickness (mm)										
	0,80	0,90	1,00	1,20	1,50	2,00	2,50	3,00	3,50	4,00	5,00
8 x 20											
10 x 10											
10 x 15											
10 x 18											
10 x 20											
10 x 25											
10 x 30											
10 x 33											
10 x 35											
10 x 40											
10 x 50											
12,7 x 12,7											
15 x 15											
15 x 20											
15 x 25											
15 x 30											
15 x 35											
15 x 40											
15 x 50											
16 x 16											
17 x 21											
17 x 35											
18 x 18											
18 x 30											
19 x 19											
20 x 20											
20 x 25											
20 x 30											
20 x 35											
20 x 40											
20 x 45											
20 x 50											
20 x 55											
20 x 60											
20 x 80											
21 x 21											
23 x 30											
25 x 25											
25,4 x 25,4											
25,4 x 50,80											
25 x 30											
25 x 35											
25 x 40											
25 x 45											
25 x 50											
25 x 55											
25 x 60											
27 x 27											
30 x 30											
30 x 35											
30 x 40											
30 x 45											
30 x 50											
30 x 60											
30 x 70											
30 x 80											
30 x 90											
32 x 32											
32 x 60											
33 x 60											
35 x 35											
35 x 40											
35 x 45											
35 x 50											
35 x 75											
38 x 38											
40 x 40											
40 x 50											
40 x 60											
40 x 70											
40 x 80											
44,5 x 44,5											
45 x 45											
50 x 50											
50 x 60											
50 x 80											
50,8 x 50,8											
60 x 60											
70x70											
80x80											
90x90											
100x100											
110x110											
120x120											
120x130											
120x140											
130x130											

(Thicknesses bigger than 5mm must be examined.)
Grades stronger than S700 must be examined.

ASTM A 513 MECHANICAL TUBING (TYPE V-VI)

OD (inch)	Wall Thickness (inch)																								
	0.035	0.049	0.058	0.065	0.083	0.095	0.109	0.120	0.125	0.134	0.156	0.165	0.180	0.188	0.207	0.219	0.238	0.250	0.281	0.284	0.313	0.344	0.375	0.406	
0.625																									
0.688																									
0.750																									
0.813																									
0.875																									
0.938																									
1.000																									
1.063																									
1.125																									
1.188																									
1.250																									
1.313																									
1.375																									
1.500																									
1.563																									
1.625																									
1.688																									
1.750																									
1.768																									
1.875																									
2.000																									
2.125																									
2.250																									
2.375																									
2.438																									
2.500																									
2.563																									
2.625																									
2.750																									
2.875																									
3.000																									
3.063																									
3.125																									
3.250																									
3.375																									
3.500																									
3.555																									
3.625																									
3.688																									
3.750																									
3.875																									
4.000																									
4.022																									
4.062																									
4.095																									
4.125																									
4.250																									
4.375																									
4.500																									
4.562																									
4.593																									
4.625																									
4.750																									
5.000																									
5.125																									

Delivery Conditions: M.D., S.S.I.D.
M.D.: Mandrel Drawn
S.S.I.D.: Special Smooth Inside Diameter
Standard Norms Supplied: ASTM A 513
Steel Grades Mainly Used: 1008-1040

Please contact our sales department for any inquiries.

FURTHER PROCESSING

With more than 65 years of experience in tube production, we provide competitive prices in-line with the demands and special requests for both our export and domestic customers

PROVIDED SERVICES ACCORDING TO CUSTOMER SPECIFIC DEMANDS;

- Cut-to-length and emptying with laser tube cutting
- Cutting, brushing, washing (according to customer specifications)
- Double end chamfering
- Heat treatment (induction hardening)
- CNC bending
- CNC milling, CNC Turning
- Tube forming, end forming (diameter expanding, reduction, flattening,...etc.)

PACKING AND DELIVERY SERVICES;

- Loading directly into the customer strongboxes
- Packing as hexagon bundle
- Packing as square bundle
- Packing into cartoon box or wooden crate
- Packing with VCI, silica gel, jute matting, oil paper
- Protection against corrosion



